



CONNECTORS

WELDING-FITTINGS

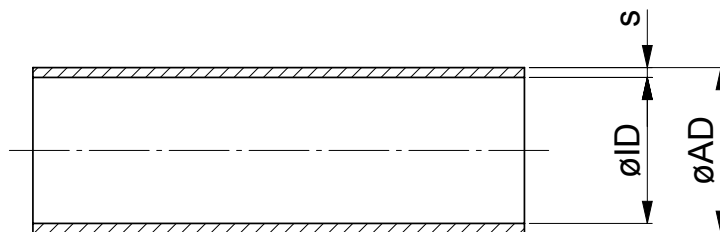
| | |
|-------------------------------------|----|
| Pipes acc. DIN 11866 | 45 |
| Pipes acc. to DIN 11866 | 46 |
| Elbow 45° acc. DIN 11865 | 47 |
| Elbow 45° acc. DIN 11865 | 48 |
| Elbow 90° acc. DIN 11865 | 49 |
| Elbow 90° acc. DIN 11865 | 50 |
| Elbow 90° (from block-body) | 51 |
| T-Piece, equal | 52 |
| T-Piece, equal | 53 |
| T-Piece, equal | 54 |
| T-Piece, equal | 55 |
| T-Piece (from block-body) | 56 |
| Cross-Piece (from block-body) | 57 |
| Concentric Reducer | 58 |
| Concentric Reducer | 59 |
| Concentric Reducer | 60 |
| Eccentric Reducer | 61 |
| Eccentric Reducer | 62 |
| Eccentric Reducer | 63 |
| Inline Sight Glass | 64 |
| Inline Sight Glass | 65 |



Pipes acc. DIN 11866

| | |
|--|---|
| Product group: | Welding-Fittings |
| Title: | Pipes acc. DIN 11866 |
| Valid standards: | DIN 11866 with pipe connection acc. ISO 1127 |
| Material: | Seamless, welded austenite stainless-steel pipe Stainless steel 1.4435 BN2 (Fe < 0,5%) acc. EN 10088-1 |
| Sterelizing temperature: | 150°C |
| Type of construction / Surface quality: | Inside and outside surface: bright finish. Butt-weld-Ends for orbital-welding Metal, shiny: Ra inside < 0,4 µm, Ra outside: < 0.8 µm Electropolishing: Ra inside < 0,6 µm, Ra outside: < 0.8 µm |
| Pipe-Hygienic Classes: | H 3 acc. DIN 11866 *H4 (Ra < 0.4µm), *H5 (Ra < 0.25µm) / *on request available |
| Tolerance: | acc. ISO 5252 D4/T3 and ASTM A269 / A270 |
| Marking: | Size, Material, Batch-Number, Producer |
| Certificates: | Certificate acc. EN 10204-3.1 |
| Remarks: | Pipes according to DIN 11866, Row A (DIN 11850) *H4 (Ra < 0.4µm), *H5 (Ra < 0.25µm) / *on request available Technical contents are subject to change |

| Dimensions for pipes according to DIN 11866, Row B (ISO 1127) | | | | | | | |
|---|-------|-------|-----|------------------|-----------------------------|---------------------------------|--|
| Sizes | ø AD | ø ID | S | Weight kg / m | Item-Number Metal, shiny | Item-Number Electropolishing | |
| acc. DIN 11866, Row B | | | | | | | |
| ISO DN 8 | 13.5 | 10.3 | 1.6 | 0.477 | 258.135.103.MB | 258.135.103 | |
| ISO DN 10 | 17.2 | 14.0 | 1.6 | 0.626 | 258.172.140.MB | 258.172.140 | |
| ISO DN 15 | 21.3 | 18.1 | 1.6 | 0.790 | 258.213.181.MB | 258.213.181 | |
| ISO DN 20 | 26.9 | 23.7 | 1.6 | 1.015 | 258.269.237.MB | 258.269.237 | |
| ISO DN 25 | 33.7 | 29.7 | 2.0 | 1.589 | 258.337.297.MB | 258.337.297 | |
| ISO DN 32 | 42.4 | 38.4 | 2.0 | 2.026 | 258.424.384.MB | 258.424.384 | |
| ISO DN 40 | 48.3 | 44.3 | 2.0 | 2.322 | 258.483.443.MB | 258.483.443 | |
| ISO DN 50 | 60.3 | 56.3 | 2.0 | 2.923 | 258.603.560.MB | 258.603.560 | |
| ISO DN 65 | 76.1 | 72.1 | 2.0 | 3.715 | 258.761.721.MB | 258.761.721 | |
| ISO DN 80 | 88.9 | 84.3 | 2.3 | 4.993 | 258.889.843.MB | 258.889.843 | |
| ISO DN 100 | 114.3 | 109.7 | 2.3 | 6.458 | 258.114.109.MB | 258.114.109 | |
| ISO DN 150 | 168.3 | 163.1 | 2.6 | 10.800 | 258.168.163.MB | 258.168.163 | |
| ISO DN 200 | 219.1 | 213.9 | 2.6 | 14.112 | 258.219.213.MB | 258.219.213 | |



Pipes acc. to DIN 11866

Product group: Welding-Fittings

Title: Pipes acc. to DIN 11866

Valid standards: acc. DIN 11866 Row C (ASME-BPE 2009)

Material: Seamless, welded austenite stainless-steel pipe
Stainless steel 1.4435 BN2 (Fe < 0,5%) acc. EN 10088-1

Sterelizing temperature: 150°C

Type of construction / Surface quality: Anschweissenden winkelrecht, vorbereitet für Orbital-Schweissung
Metal, shiny: Ra inside < 0,4 µm, Ra outside: < 0.8 µm
Electropolishing: Ra inside < 0,6 µm, Ra outside: < 0.8 µm

Pipe-Hygienic Classes: H 3 acc. DIN 11866
*H4 (Ra < 0.4µm), *H5 (Ra < 0.25µm) / *on request available

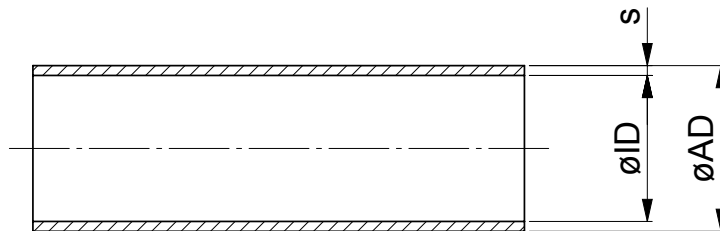
Tolerance: acc. ISO 5252 D4/T3 and ASTM A269 / A270

Marking: Size, Material, Batch-Number, Producer

Certificates: Certificate acc. EN 10204-3.1

Remarks: Pipes according to DIN 11866, Row A (DIN 11850) on request available.
Technical contents are subject to change

| Dimensions for pipes according to DIN 11866, Row C (ASME-BPE 2009) | | | | | | | |
|--|--------|--------|------|-------------------|-----------------------------|---------------------------------|--|
| Sizes | ø AD | ø ID | S | Gewicht kg / m | Item-Number Metal, shiny | Item-Number Electropolishing | |
| acc.DIN 11866 Row C (ASME-BPE 2009) | | | | | | | |
| OD 1/8" | 3.18 | 2.06 | 0.56 | 0.036 | 258.031.020.MB | 258.031.020 | |
| OD 1/4" | 6.35 | 4.37 | 0.89 | 0.124 | 258.063.043.MB | 258.063.043 | |
| OD 3/8" | 9.53 | 7.55 | 0.89 | 0.196 | 258.095.075.MB | 258.095.075 | |
| OD 1/2" | 12.70 | 9.40 | 1.65 | 0.457 | 258.127.094.MB | 258.127.094 | |
| OD 3/4" | 19.05 | 15.75 | 1.65 | 0.720 | 258.195.157.MB | 258.195.157 | |
| OD 1" | 25.40 | 22.10 | 1.65 | 0.982 | 258.254.221.MB | 258.254.221 | |
| OD 1 1/2" | 38.10 | 34.80 | 1.65 | 1.507 | 258.381.348.MB | 258.381.348 | |
| OD 2" | 50.80 | 47.50 | 1.65 | 2.033 | 258.508.475.MB | 258.508.475 | |
| OD 2 1/2" | 63.50 | 60.20 | 1.65 | 2.559 | 258.635.602.MB | 258.635.602 | |
| OD 3" | 76.20 | 72.90 | 1.65 | 3.083 | 258.761.719.MB | 258.761.719 | |
| OD 4" | 101.60 | 97.38 | 2.11 | 5.262 | 258.101.974.MB | 258.101.974 | |
| OD 6" | 152.40 | 146.86 | 2.77 | 10.390 | 258.152.146.MB | 258.152.146 | |



Elbow 45° acc. DIN 11865

Product group: Welding-Fittings

Title: Elbow 45° acc. DIN 11865

Valid standards: DIN 11865 with pipe connection acc. DIN 11866 Row B (ISO 1127)

Material: Seamless, welded austenite stainless-steel pipe
Stainless steel 1.4435 BN2 (Fe < 0,5%) acc. EN 10088

Sterelizing temperature: 150°C

Type of construction / Surface quality: Inside and outside surface: bright finish. Buttweld-Ends for orbital-welding
Metal, shiny: Ra inside < 0,8 µm, Ra outside: < 0.8 µm
Electropolishing: Ra inside < 0,6 µm, Ra outside: < 0.8 µm

Pipe-Hygienic Classes: H3 acc. DIN 11866
*H4 (Ra < 0.4µm), *H5 (Ra < 0.25µm) / *on request available

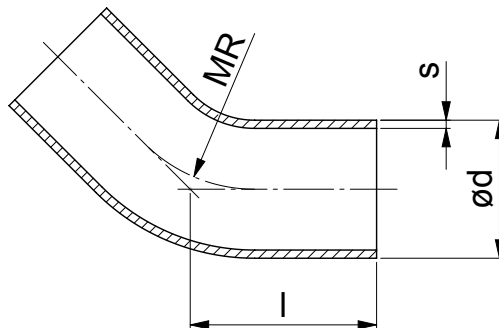
Tolerance: acc. ISO 5252 D4/T3 and ASTM A269 / A270

Marking: Size, Material, Batch-Number, Producer

Certificates: Certificate acc. EN 10204-3.1

Remarks: Dimensions acc. DIN 11866, Row A (DIN 11850) on request available.
Technical contents are subject to change

| Dimensions for arc 45° according to DIN 11865 | | | | | | | |
|---|-------|------|--------|--------|-----------------------------|---------------------------------|--|
| Sizes | d | S | l mm | MR mm | Item-Number Metal, shiny | Item-Number Electropolishing | |
| acc. DIN 11866 row B (ISO 1127) | | | | | | | |
| ISO DN 8 | 13.50 | 1.60 | 33.30 | 20.00 | 252.135.103.45MB | 252.135.103.45 | |
| ISO DN 10 | 17.20 | 1.60 | 36.60 | 28.00 | 252.172.140.45MB | 252.172.140.45 | |
| ISO DN 15 | 21.30 | 1.60 | 37.40 | 30.00 | 252.213.181.45MB | 252.213.181.45 | |
| ISO DN 20 | 26.90 | 1.60 | 51.80 | 28.50 | 252.269.237.45MB | 252.269.237.45 | |
| ISO DN 25 | 33.70 | 2.00 | 55.70 | 38.00 | 252.337.297.45MB | 252.337.297.45 | |
| ISO DN 32 | 42.40 | 2.00 | 59.70 | 47.50 | 252.424.384.45MB | 252.424.384.45 | |
| ISO DN 40 | 48.30 | 2.00 | 63.60 | 57.00 | 252.483.443.45MB | 252.483.443.45 | |
| ISO DN 50 | 60.30 | 2.00 | 71.50 | 76.00 | 252.603.563.45MB | 252.603.563.45 | |
| ISO DN 65 | 76.10 | 2.00 | 94.40 | 95.00 | 252.761.721.45MB | 252.761.721.45 | |
| ISO DN 80 | 88.90 | 2.30 | 102.40 | 114.50 | 252.889.844.45MB | 252.889.844.45 | |
| ISO DN 100 | 114.3 | 2.30 | 118.20 | 152.50 | 252.114.109.45MB | 252.114.109.45 | |



Elbow 45° acc. DIN 11865

Product group: Welding-Fittings

Title: Elbow 45° acc. DIN 11865

Valid standards: DIN 11865 with pipe connection acc DIN 11866 Row C (ASME-BPE 2009)

Material: Seamless, welded austenite stainless-steel pipe
Stainless steel 1.4435 BN2 (Fe < 0,5%) acc. EN 10088-1

Sterelizing temperature: 150°C

Type of construction / Surface quality: Inside and outside surface: bright finish. Buttweld-Ends for orbital-welding
Metal, shiny: Ra inside < 0,8 µm, Ra outside: < 0.8 µm
Electropolishing: Ra inside < 0,6 µm, Ra outside: < 0.8 µm

Pipe-Hygienic Classes: H3 acc. DIN 11866
*H4 (Ra < 0.4µm), *H5 (Ra < 0.25µm) / *on request available

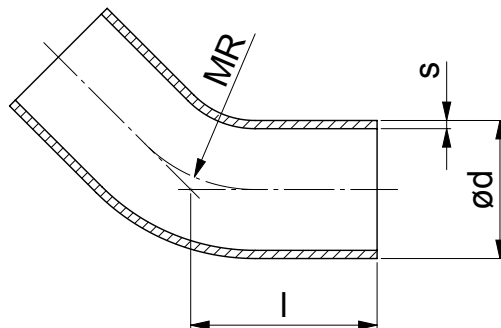
Tolerance: acc. ISO 5252 D4/T3 and ASTM A269 / A270

Marking: Size, Material, Batch-Number, Producer

Certificates: Certificate acc. EN 10204-3.1B

Remarks: Dimensions acc. DIN 11866, Row A (DIN 11850) on request available.
Technical contents are subject to change

| Dimensions for arc 45° acc. to DIN 11865 | | | | | | | |
|--|--------|------|--------|--------|------------------|---------------------------------|--|
| Sizes | d | S | l/A mm | MR mm | Item-Number | Item-Number Electropolishing | |
| acc. DIN 11866 Row B (ISO 1127) | | | | | | | |
| OD 1/4" | 6.35 | 0.89 | 50.80 | 15.90 | 252.063.045.45MB | 252.063.045.45 | |
| OD 3/8" | 9.53 | 0.89 | 50.80 | 23.80 | 252.095.077.45MB | 252.095.077.45 | |
| OD 1/2" | 12.70 | 1.65 | 57.20 | 27.00 | 252.127.094.45MB | 252.127.094.45 | |
| OD 3/4" | 19.05 | 1.65 | 57.20 | 26.00 | 252.195.157.45MB | 252.195.157.45 | |
| OD 1" | 25.40 | 1.65 | 57.20 | 38.10 | 252.254.221.45MB | 252.254.221.45 | |
| OD 1 1/2" | 38.10 | 1.65 | 63.50 | 57.20 | 252.381.348.45MB | 252.371.348.45 | |
| OD 2" | 50.80 | 1.65 | 76.20 | 76.20 | 252.508.475.45MB | 252.508.475.45 | |
| OD 2 1/2" | 63.50 | 1.65 | 85.70 | 95.30 | 252.635.602.45MB | 252.635.602.45 | |
| OD 3" | 76.20 | 1.65 | 92.10 | 114.30 | 252.762.729.45MB | 252.762.729.45 | |
| OD 4" | 101.60 | 2.11 | 114.30 | 152.40 | 252.101.973.45MB | 252.101.973.45 | |
| OD 6" | 152.40 | 2.77 | 158.80 | 228.60 | 252.152.146.45MB | 252.152.146.45 | |



Elbow 90° acc. DIN 11865

Product group: Welding-Fittings

Title: Elbow 90° acc. DIN 11865

Valid standards: DIN 11865 with pipe connection acc. DIN 11866 Row B (ISO 1127)

Material: Seamless, welded austenite stainless-steel pipe
Stainless steel 1.4435 BN2 (Fe < 0,5%) acc. EN 10088-1

Sterelizing temperature: 150°C

Type of construction / Surface quality: Inside and outside surface: bright finish. Buttweld-Ends for orbital-welding
Metal, shiny: Ra inside < 0,8 µm, Ra outside: < 0.8 µm
Electropolishing: Ra inside < 0,6 µm, Ra outside: < 0.8 µm

Pipe-Hygienic Classes: H3 acc. DIN 11866
*H4 (Ra < 0.4µm), *H5 (Ra < 0.25µm) / *on request available

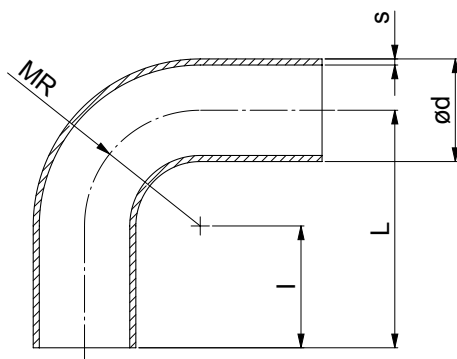
Tolerance: acc. ISO 5252 D4/T3 and ASTM A269 / A270

Marking: Size, Material, Batch-Number, Producer

Certificate: Certificate acc. EN 10204-3.1

Remarks: Dimensions acc. ISO 11865
Technical contents are subject to change

| Dimensions for Elbow 45° acc. DIN 11865 | | | | | | | | |
|---|-------|------|--------|-------|--------|-----------------------------|---------------------------------|--|
| Sizes | d | S | L mm | l mm | MR mm | Item-Number Metal, shiny | Item-Number Electropolishing | |
| acc. DIN 11866 Row B (ISO 1127) | | | | | | | | |
| ISO DN 8 | 13.50 | 1.60 | 45.00 | 25.00 | 20.00 | 252.135.103.MB | 252.135.103 | |
| ISO DN 10 | 17.20 | 1.60 | 53.00 | 25.00 | 28.00 | 252.172.140.MB | 252.172.140 | |
| ISO DN 15 | 21.30 | 1.60 | 55.00 | 25.00 | 30.00 | 252.213.181.MB | 252.213.181 | |
| ISO DN 20 | 26.90 | 1.60 | 68.50 | 40.00 | 28.50 | 252.269.237.MB | 252.269.237 | |
| ISO DN 25 | 33.70 | 2.00 | 78.00 | 40.00 | 38.00 | 252.337.297.MB | 252.337.297 | |
| ISO DN 32 | 42.40 | 2.00 | 87.50 | 40.00 | 47.50 | 252.424.384.MB | 252.424.384 | |
| ISO DN 40 | 48.30 | 2.00 | 97.00 | 40.00 | 57.00 | 252.483.443.MB | 252.483.443 | |
| ISO DN 50 | 60.30 | 2.00 | 116.00 | 40.00 | 76.00 | 252.603.563.MB | 252.603.563 | |
| ISO DN 65 | 76.10 | 2.00 | 150.00 | 55.00 | 95.00 | 252.761.721.MB | 252.761.721 | |
| ISO DN 80 | 88.90 | 2.30 | 169.50 | 55.00 | 114.50 | 252.889.844.MB | 252.889.844 | |
| ISO DN 100 | 114.3 | 2.30 | 207.50 | 55.00 | 152.50 | 252.114.109.MB | 252.114.109 | |



Elbow 90° acc. DIN 11865

Product group: Welding-Fittings

Title: Elbow 90° acc. DIN 11865

Valid standards: DIN 11865 with pipe connection acc. DIN 11866 Row C (ASME-BPE 2009)

Material: Seamless, welded austenite stainless-steel pipe
Stainless steel 1.4435 BN2 (Fe < 0,5%) acc. EN 10088-1

Sterilizing temperature: 150°C

Type of construction / Surface quality: Inside and outside surface: bright finish. Butt-weld-Ends for orbital-welding
Metal, shiny: Ra inside < 0,8 µm, Ra outside: < 0.8 µm
Electropolishing: Ra inside < 0,6 µm, Ra outside: < 0.8 µm

Pipe-Hygienic Classes: H3 acc. DIN 11866
*H4 (Ra < 0.4µm), *H5 (Ra < 0.25µm) / *on request available

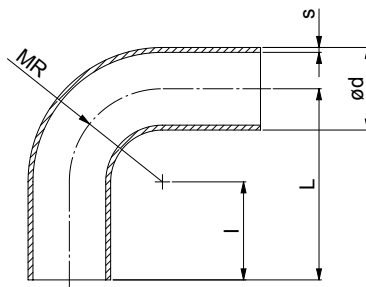
Tolerance: acc. DIN EN 1127 / ISO 5252 D4/T3 and ASTM A269 / A270

Marking: Size, Material, Batch-Number, Producer

Certificates: Certificate acc. EN 10204-3.1B

Remarks: Dimensions acc. DIN 11866, Row A (DIN 11850) on request available.
Technical contents are subject to change

| Dimensions for Elbow 90° acc. DIN 11865 | | | | | | | | |
|---|--------|------|----------|-------|--------|-----------------------------|---------------------------------|--|
| Sizes | d | S | L / A mm | l mm | MR mm | Item-Number Metal, shiny | Item-Number Electropolishing | |
| acc. DIN 11866 Row C (ASME-BPE 2009) | | | | | | | | |
| OD 1/4" | 6.35 | 0.89 | 66.70 | 50.80 | 14.30 | 252.063.045.MB | 252.063.045 | |
| OD 3/8" | 9.53 | 0.89 | 66.70 | 42.70 | 28.60 | 252.095.077.MB | 252.095.077 | |
| OD 1/2" | 12.70 | 1.24 | 76.20 | 49.20 | 28.60 | 252.127.094.MB | 252.127.094 | |
| OD 3/4" | 19.05 | 1.65 | 76.20 | 50.20 | 28.60 | 252.195.157.MB | 252.195.157 | |
| OD 1" | 25.40 | 1.65 | 76.20 | 38.10 | 38.10 | 252.254.221.MB | 252.254.221 | |
| OD 1 1/2" | 38.10 | 1.65 | 95.30 | 38.10 | 57.20 | 252.381.348.MB | 252.381.348 | |
| OD 2" | 50.80 | 1.65 | 120.70 | 44.50 | 76.20 | 252.508.475.MB | 252.508.475 | |
| OD 2 1/2" | 63.50 | 1.65 | 139.70 | 44.50 | 95.30 | 252.635.602.MB | 252.635.602 | |
| OD 3" | 76.20 | 1.65 | 158.50 | 44.50 | 114.30 | 252.762.729.MB | 252.762.729 | |
| OD 4" | 101.60 | 2.11 | 203.20 | 50.80 | 152.40 | 252.101.974.MB | 252.101.974 | |
| OD 6" | 152.40 | 2.77 | 292.10 | 63.50 | 228.60 | 252.152.146.MB | 252.152.146 | |



Elbow 90° (from block-body)

| | |
|--|---|
| Product group: | Welding-Fittings |
| Title: | Elbow 90° (from block-body) |
| Valid standards: | Pipe connection acc. h DIN 11866 Row B (ISO 1127) |
| Material: | Stainless steel 1.4435 BN2 (Fe < 0,5%) acc. EN 10088 |
| Sterelizing temperature: | 150°C |
| Type of construction / Surface quality: | Inside and outside surface: bright finish. Butt weld-Ends for welding Ra inside < 0,4 µm, Ra outside: < 0.8 µm |
| Pipe-Hygienic Classes: | H 3 / H 4 nach DIN 11866 |
| Marking: | Material, Batch-Number, Producer |
| Certificates: | Certificate acc. EN 10204-3.1 |
| Option: | Electropolishing. Further dimensions on request available. |
| Remarks: | All sizes made from block-body Technical contents are subject to change |

| Dimensions for Elbow 90° | | | | | |
|---------------------------------|------|------|------|-------------|--|
| Sizes | AD | ID | L | Item-Number | |
| acc. DIN 11866 Row B (ISO 1127) | | | | | |
| ISO DN 6 | 10.2 | 7.0 | 24.0 | 252.045.006 | |
| ISO DN 8 | 13.5 | 10.3 | 24.0 | 252.045.008 | |
| ISO DN 10 | 17.2 | 14.0 | 24.0 | 252.045.010 | |

The drawing shows a 90-degree elbow in a cross-sectional view. Dimension 'L' is the length of the straight section of the elbow. Dimension 'ID' is the inner diameter of the pipe. Dimension 'AD' is the outer diameter of the pipe. The elbow is shown with a 90-degree bend and a smooth transition between the two pipe sections.

T-Piece, equal

Product group: Welding-Fittings

Title: T-Piece, equal acc. DIN 11865

Valid standards: DIN 11865 with pipe connection acc. DIN 11866 Row B (ISO 1127)

Material: Seamless, welded austenite stainless-steel pipe
Stainless steel 1.4435 BN2 acc. EN 10088

Sterelizing temperature: 150°C

Type of construction / Surface quality: Inside and outside surface: bright finish. Butt-weld-Ends for orbital-welding
Metal, shiny: Ra inside < 0,8 µm, Ra outside: < 0.8 µm
Electropolishing: Ra inside < 0,6 µm, Ra outside: < 0.8 µm

Pipe-Hygienic Classes: H3 acc. DIN 11866
*H4 (Ra < 0.4µm), *H5 (Ra < 0.25µm) / *on request available

Tolerance: acc. ISO 5252 D4/T3 and ASTM A269 / A270

Marking: Size, Material, Batch-Number, Producer

Certificates: Certificate acc. EN 10204-3.1B

Remarks: Dimensions acc. DIN 11866, Row A (DIN 11850) on request available.
T-pieces with short outlet also available upon request
Technical contents are subject to change

| Dimensions for T-Piece | | | | | | | | |
|-----------------------------------|---------------|---------------|---------|---------|----------------|--|------------------|--|
| Sizes | D / d mm | S1 / S2 mm | L mm | l mm | Item-Number | | Item-Number | |
| | | | | | Metal, shiny | | Electropolishing | |
| acc. DIN 11866 Reihe B (ISO 1127) | | | | | | | | |
| ISO DN 8 x 8 | 13.50 x 13.50 | 1.60 / 1.60 | 64.00 | 32.00 | 253.135.103.MB | | 253.135.103 | |
| ISO DN 10 x 8 | 17.20 x 13.50 | 1.60 / 1.60 | 68.00 | 34.00 | 253.172.135.MB | | 253.172.135 | |
| ISO DN 10 x 10 | 17.20 x 17.20 | 1.60 / 1.60 | 68.00 | 34.00 | 253.172.140.MB | | 253.172.140 | |
| ISO DN 15 x 8 | 21.30 x 13.50 | 1.60 / 1.60 | 72.00 | 36.00 | 253.213.135.MB | | 253.213.135 | |
| ISO DN 15 x 10 | 21.30 x 17.20 | 1.60 / 1.60 | 72.00 | 36.00 | 253.213.172.MB | | 253.213.172 | |
| ISO DN 15 x 15 | 21.30 x 21.30 | 1.60 / 1.60 | 72.00 | 36.00 | 253.213.181.MB | | 253.213.181 | |
| ISO DN 20 x 8 | 26.90 x 13.50 | 1.60 / 1.60 | 110.00 | 55.00 | 253.269.135.MB | | 253.269.135 | |
| ISO DN 20 x 10 | 26.90 x 17.20 | 1.60 / 1.60 | 110.00 | 55.00 | 253.269.172.MB | | 253.269.172 | |
| ISO DN 20 x 15 | 26.90 x 21.30 | 1.60 / 1.60 | 110.00 | 55.00 | 253.269.213.MB | | 253.269.213 | |
| ISO DN 20 x 20 | 26.90 x 26.90 | 1.60 / 1.60 | 110.00 | 55.00 | 253.269.237.MB | | 253.269.237 | |

T-Piece, equal

Product group: Welding-Fittings

Valid standards: DIN 11865 with pipe connection acc. DIN 11866 Row B (ISO 1127)

Remarks: Dimensions acc. DIN 11866, Row A (DIN 11850) on request available
T-pieces with a short outlet also available upon request
Technical contents are subject to change

| Dimensions for Reduced T-Piece | | | | | | | |
|---------------------------------|----------|----------------|-------------|--------|--------|----------------|------------------|
| Sizes | D / d | | S1 / S2 | L | l | Item-Number | Item-Number |
| | mm | | mm | mm | mm | Metal, shiny | Electropolishing |
| acc. DIN 11866 Row B (ISO 1127) | | | | | | | |
| ISO DN | 25 x 10 | 33.70 x 17.20 | 2.00 / 1.60 | 120.00 | 60.00 | 253.337.172.MB | 253.337.172 |
| ISO DN | 25 x 15 | 33.70 x 21.30 | 2.00 / 1.60 | 120.00 | 60.00 | 253.337.213.MB | 253.337.213 |
| ISO DN | 25 x 20 | 33.70 x 26.90 | 2.00 / 1.60 | 120.00 | 60.00 | 253.337.269.MB | 253.337.269 |
| ISO DN | 25 x 25 | 33.70 x 33.70 | 2.00 / 2.00 | 120.00 | 60.00 | 253.337.297.MB | 253.337.297 |
| ISO DN | 32 x 15 | 42.40 x 21.30 | 2.00 / 1.60 | 130.00 | 65.00 | 253.424.213.MB | 253.424.213 |
| ISO DN | 32 x 20 | 42.40 x 26.90 | 2.00 / 1.60 | 130.00 | 65.00 | 253.424.269.MB | 253.424.269 |
| ISO DN | 32 x 25 | 42.40 x 33.70 | 2.00 / 2.00 | 130.00 | 65.00 | 253.424.337.MB | 253.424.337 |
| ISO DN | 32 x 32 | 42.40 x 42.40 | 2.00 / 2.00 | 130.00 | 65.00 | 253.424.384.MB | 253.424.384 |
| ISO DN | 40 x 15 | 48.30 x 21.30 | 2.00 / 1.60 | 130.00 | 65.00 | 253.483.213.MB | 253.483.213 |
| ISO DN | 40 x 20 | 48.30 x 26.90 | 2.00 / 1.60 | 130.00 | 65.00 | 253.483.269.MB | 253.483.269 |
| ISO DN | 40 x 25 | 48.30 x 33.70 | 2.00 / 2.00 | 130.00 | 65.00 | 253.483.337.MB | 253.483.337 |
| ISO DN | 40 x 32 | 48.30 x 42.40 | 2.00 / 2.00 | 130.00 | 65.00 | 253.483.424.MB | 253.483.424 |
| ISO DN | 40 x 40 | 48.30 x 48.30 | 2.00 / 2.00 | 130.00 | 65.00 | 253.483.443.MB | 253.483.443 |
| ISO DN | 50 x 20 | 60.30 x 26.90 | 2.00 / 1.60 | 180.00 | 90.00 | 253.603.269.MB | 253.603.269 |
| ISO DN | 50 x 25 | 60.30 x 33.70 | 2.00 / 2.00 | 180.00 | 90.00 | 253.603.337.MB | 253.603.337 |
| ISO DN | 50 x 32 | 60.30 x 42.40 | 2.00 / 2.00 | 180.00 | 90.00 | 253.603.424.MB | 253.603.424 |
| ISO DN | 50 x 40 | 60.30 x 48.30 | 2.00 / 2.00 | 180.00 | 90.00 | 253.603.483.MB | 253.603.483 |
| ISO DN | 50 x 50 | 60.30 x 60.30 | 2.00 / 2.00 | 180.00 | 90.00 | 253.603.563.MB | 253.603.563 |
| ISO DN | 65 x 25 | 76.10 x 33.70 | 2.00 / 2.00 | 220.00 | 90.00 | 253.761.337.MB | 253.761.337 |
| ISO DN | 65 x 32 | 76.10 x 42.40 | 2.00 / 2.00 | 220.00 | 90.00 | 253.761.424.MB | 253.761.424 |
| ISO DN | 65 x 40 | 76.10 x 48.30 | 2.00 / 2.00 | 220.00 | 90.00 | 253.761.483.MB | 253.761.483 |
| ISO DN | 65 x 50 | 76.10 x 60.30 | 2.00 / 2.00 | 220.00 | 90.00 | 253.761.603.MB | 253.761.603 |
| ISO DN | 65 x 65 | 76.10 x 76.10 | 2.00 / 2.00 | 220.00 | 110.00 | 253.761.721.MB | 253.761.721 |
| ISO DN | 80 x 32 | 88.90 x 42.40 | 2.30 / 2.00 | 260.00 | 110.00 | 253.889.424.MB | 253.889.424 |
| ISO DN | 80 x 40 | 88.90 x 48.30 | 2.30 / 2.00 | 260.00 | 110.00 | 253.889.483.MB | 253.889.483 |
| ISO DN | 80 x 50 | 88.90 x 60.30 | 2.30 / 2.00 | 160.00 | 110.00 | 253.889.603.MB | 253.889.603 |
| ISO DN | 80 x 65 | 88.90 x 76.10 | 2.30 / 2.00 | 260.00 | 110.00 | 253.889.761.MB | 253.889.761 |
| ISO DN | 80 x 80 | 88.90 x 88.90 | 2.30 / 2.30 | 260.00 | 130.00 | 253.889.884.MB | 253.889.884 |
| ISO DN | 100 x 50 | 114.30 x 60.30 | 2.30 / 2.00 | 320.00 | 130.00 | 253.114.603.MB | 253.114.603 |
| ISO DN | 100 x 65 | 114.30 x 76.10 | 2.30 / 2.00 | 320.00 | 130.00 | 253.114.761.MB | 253.114.761 |
| ISO DN | 100 x 80 | 114.30 x 88.90 | 2.30 / 2.30 | 320.00 | 130.00 | 253.114.889.MB | 253.114.889 |

T-Piece, equal

Product group: Welding-Fittings

Title: T-Piece, equal acc. DIN 11865

Valid standards: DIN 11865 with pipe connection acc. DIN 11866 Row C (ASME-BPE 2009)

Material: Seamless, welded austenite stainless-steel pipe
Stainless steel 1.4435 BN2 acc. EN 10088-1

Sterelizing temperature: 150°C

Type of construction / Surface quality: Inside and outside surface: bright finish. Buttweild-Ends for orbital-welding
Metal Blank: Ra inside < 0,8 µm, Ra outside: < 0.8 µm
Electropolishing: Ra inside < 0,6 µm, Ra outside: < 0.8 µm

Pipe-Hygienic Classes: H3 acc. DIN 11866
*H4 (Ra < 0.4µm), *H5 (Ra < 0.25µm) / *on request available

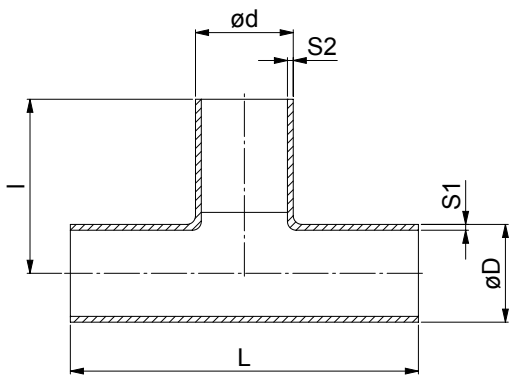
Tolerance: acc. ISO 5252 D4/T3 and ASTM A269 / A270

Marking: Size, Material, Batch-Number, Producer

Certificates: Certificate acc. EN 10204-3.1B

Remarks: Dimensions acc. DIN 11866, Row A (DIN 11850) on request available
T-Piece with short outlet available upon request
Technical contents are subject to change

| Dimensions for T-Piece, equal acc. DIN 11865 | | | | | | | | | | | |
|--|------|-------------|------|---------------|-------|--------------|--------|-------------|--|----------------------------|---------------------------------|
| Sizes | | D / d mm | | S1 / S2 mm | | L / 2A mm | | I / B mm | | Item-Number Metal Shiny | Item-Number Electropolishing |
| acc. DIN 11866 Row C (ASME-BPE 2009) | | | | | | | | | | | |
| BS | 1/4" | x | 1/4" | 6.35 x | 6.35 | 0.89 / 0.89 | 89.00 | 44.50 | | 253.063.045.MB | 253.063.045 |
| BS | 3/8" | x | 1/4" | 9.53 x | 6.35 | 0.89 / 0.89 | 89.00 | 44.50 | | 253.095.063.MB | 253.095.063 |
| BS | 3/8" | x | 3/8" | 9.53 x | 9.53 | 0.89 / 0.89 | 89.00 | 44.50 | | 253.095.077.MB | 253.095.077 |
| BS | 1/2" | x | 1/4" | 12.70 x | 6.35 | 1.65 / 0.89 | 95.20 | 47.60 | | 253.127.063.MB | 253.127.094 |
| BS | 1/2" | x | 3/8" | 12.70 x | 9.53 | 1.65 / 0.89 | 95.20 | 47.60 | | 253.127.095.MB | 253.127.095 |
| BS | 1/2" | x | 1/2" | 12.70 x | 12.70 | 1.65 / 1.65 | 95.20 | 47.60 | | 253.127.094.MB | 253.127.094 |
| BS | 3/4" | x | 1/4" | 19.05 x | 6.35 | 1.65 / 0.89 | 101.60 | 50.80 | | 253.195.063.MB | 253.195.063 |
| BS | 3/4" | x | 3/8" | 19.05 x | 9.53 | 1.65 / 0.89 | 101.60 | 50.80 | | 253.195.095.MB | 253.195.095 |
| BS | 3/4" | x | 1/2" | 19.05 x | 12.70 | 1.65 / 1.65 | 101.60 | 50.80 | | 253.195.127.MB | 253.195.127 |
| BS | 3/4" | x | 3/4" | 19.05 x | 19.05 | 1.65 / 1.65 | 101.60 | 50.80 | | 253.195.157.MB | 253.195.157 |



T-Piece, equal

Product group:

Welding-Fittings

Bezeichnung:

DIN 11865 with pipe connection acc. DIN 11866 Row C (ASME-BPE 2009)

Remarks:

Dimensions acc. DIN 11866, Row A (DIN 11850) on request available

T-pieces with short output also available upon request

Technical contents are subject to change

| Dimensions for T-Piece, equal acc. DIN 11865 | | | | | | | | | | |
|--|--------|---|--------|-----------------|---------------|--------------|-------------|----------------------------|---------------------------------|--|
| Sizes | | | | D / d mm | S1 / S2 mm | L / 2A mm | I / B mm | Item-Number Metal shiny | Item-Number Electropolishing | |
| acc. DIN 11866 Row C (ASME-BPE 2009) | | | | | | | | | | |
| BS | 1" | x | 1/4" | 25.40 x 6.35 | 1.65 / 0.89 | 108.00 | 54.00 | 253.254.063.MB | 253.254.063 | |
| BS | 1" | x | 3/8" | 25.40 x 9.53 | 1.65 / 0.89 | 108.00 | 54.00 | 253.254.095.MB | 253.254.095 | |
| BS | 1" | x | 1/2" | 25.40 x 12.70 | 1.65 / 1.65 | 108.00 | 54.00 | 253.254.127.MB | 253.254.127 | |
| BS | 1" | x | 3/4" | 25.40 x 19.05 | 1.65 / 1.65 | 108.00 | 54.00 | 253.254.195.MB | 253.254.195 | |
| BS | 1" | x | 1" | 25.40 x 25.40 | 1.65 / 1.65 | 108.00 | 54.00 | 253.254.221.MB | 253.254.221 | |
| BS | 1 1/2" | x | 1/2" | 38.10 x 12.70 | 1.65 / 1.65 | 120.60 | 60.30 | 253.381.127.MB | 253.381.127 | |
| BS | 1 1/2" | x | 3/4" | 38.10 x 19.05 | 1.65 / 1.65 | 120.60 | 60.30 | 253.381.195.MB | 253.381.195 | |
| BS | 1 1/2" | x | 1" | 38.10 x 25.40 | 1.65 / 1.65 | 120.60 | 60.30 | 253.381.254.MB | 253.381.254 | |
| BS | 1 1/2" | x | 1 1/2" | 38.10 x 38.10 | 1.65 / 1.65 | 120.60 | 60.30 | 253.381.348.MB | 253.381.348 | |
| BS | 2" | x | 1/2" | 50.80 x 12.70 | 1.65 / 1.65 | 146.00 | 66.70 | 253.508.127.MB | 253.508.127 | |
| BS | 2" | x | 3/4" | 50.80 x 19.05 | 1.65 / 1.65 | 146.00 | 66.70 | 253.508.195.MB | 253.508.195 | |
| BS | 2" | x | 1" | 50.80 x 25.40 | 1.65 / 1.65 | 146.00 | 66.70 | 253.508.254.MB | 253.508.254 | |
| BS | 2" | x | 1 1/2" | 50.80 x 38.10 | 1.65 / 1.65 | 146.00 | 66.70 | 253.508.381.MB | 253.508.381 | |
| BS | 2" | x | 2" | 50.80 x 50.80 | 1.65 / 1.65 | 146.00 | 66.70 | 253.508.475.MB | 253.508.475 | |
| BS | 2 1/2" | x | 1/2" | 63.50 x 12.70 | 1.65 / 1.65 | 158.80 | 73.00 | 253.635.127.MB | 253.635.127 | |
| BS | 2 1/2" | x | 3/4" | 63.50 x 19.05 | 1.65 / 1.65 | 158.80 | 73.00 | 253.635.195.MB | 253.635.195 | |
| BS | 2 1/2" | x | 1" | 63.50 x 25.40 | 1.65 / 1.65 | 158.80 | 73.00 | 253.635.254.MB | 253.635.254 | |
| BS | 2 1/2" | x | 1 1/2" | 63.50 x 38.10 | 1.65 / 1.65 | 158.80 | 73.00 | 253.635.381.MB | 253.635.381 | |
| BS | 2 1/2" | x | 2" | 63.50 x 50.80 | 1.65 / 1.65 | 158.80 | 73.00 | 253.635.508.MB | 253.635.508 | |
| BS | 2 1/2" | x | 2 1/2" | 63.50 x 63.50 | 1.65 / 1.65 | 158.80 | 73.00 | 253.635.602.MB | 253.635.602 | |
| BS | 3" | x | 1/2" | 76.20 x 12.70 | 1.65 / 1.65 | 171.40 | 79.40 | 253.762.127.MB | 253.762.127 | |
| BS | 3" | x | 3/4" | 76.20 x 19.05 | 1.65 / 1.65 | 171.40 | 79.40 | 253.762.195.MB | 253.762.195 | |
| BS | 3" | x | 1" | 76.20 x 25.40 | 1.65 / 1.65 | 171.40 | 79.40 | 253.762.254.MB | 253.762.254 | |
| BS | 3" | x | 1 1/2" | 76.20 x 38.10 | 1.65 / 1.65 | 171.40 | 79.40 | 253.762.381.MB | 253.762.381 | |
| BS | 3" | x | 2" | 76.20 x 50.80 | 1.65 / 1.65 | 171.40 | 79.40 | 253.762.508.MB | 253.762.508 | |
| BS | 3" | x | 2 1/2" | 76.20 x 63.50 | 1.65 / 1.65 | 171.40 | 79.40 | 253.762.635.MB | 253.762.635 | |
| BS | 3" | x | 3" | 76.20 x 76.20 | 1.65 / 1.65 | 171.40 | 79.40 | 253.762.729.MB | 253.762.729 | |
| BS | 4" | x | 1/2" | 101.60 x 12.70 | 2.11 / 1.65 | 209.60 | 98.40 | 253.101.127.MB | 253.101.127 | |
| BS | 4" | x | 3/4" | 101.60 x 19.05 | 2.11 / 1.65 | 209.60 | 98.40 | 253.101.195.MB | 253.101.195 | |
| BS | 4" | x | 1" | 101.60 x 25.40 | 2.11 / 1.65 | 209.60 | 98.40 | 253.101.254.MB | 253.101.254 | |
| BS | 4" | x | 1 1/2" | 101.60 x 38.10 | 2.11 / 1.65 | 209.60 | 98.40 | 253.101.381.MB | 253.101.381 | |
| BS | 4" | x | 2" | 101.60 x 50.80 | 2.11 / 1.65 | 209.60 | 98.40 | 253.101.508.MB | 253.101.508 | |
| BS | 4" | x | 2 1/2" | 101.60 x 63.50 | 2.11 / 1.65 | 209.60 | 98.40 | 253.101.635.MB | 253.101.635 | |
| BS | 4" | x | 3" | 101.60 x 76.20 | 2.11 / 1.65 | 209.60 | 98.40 | 253.101.762.MB | 253.101.762 | |
| BS | 4" | x | 4" | 101.60 x 101.60 | 2.11 / 2.11 | 209.60 | 104.80 | 253.101.974.MB | 253.101.974 | |
| BS | 6" | x | 4" | 152.40 x 101.60 | 2.77 / 2.11 | 285.80 | 130.20 | 253.152.101.MB | 253.152.101 | |
| BS | 6" | x | 6" | 152.40 x 152.40 | 2.77 / 2.77 | 285.80 | 142.90 | 253.152.146.MB | 253.152.146 | |

T-Piece (from block-body)

Product group: Welding-Fittings

Title: T-Piece (from block-body)

Valid standards: Pipe connection acc. DIN 11866 Row B (ISO 1127)

Material: Stainless steel 1.4435 BN2 (Fe < 0,5%) acc. EN 10088

Sterelizing temperature: 150°C

Type of construction / Surface quality: Inside and outside surface: bright finish. Buttweld-Ends for welding.
Ra inside < 0,4 µm, Ra outside: < 0.8 µm

Pipe-Hygienic Classes: H3 / H4 acc. DIN 11866

Marking: Material, Batch-Number, Producer

Certificates: Certificate acc. EN 10204-3.1B

Option: Electropolishing and further dimensions on request available.

Remarks: All sizes made from block-body
Technical contents are subject to change

| Dimensions for T-Piece (from block-body) | | | | | |
|--|------|------|------|-------------|--|
| Sizes | AD | ID | L | Item-Number | |
| acc. DIN 11866 Row B (ISO 1127) | | | | | |
| ISO DN 6 | 10.2 | 7.0 | 24.0 | 253.045.006 | |
| ISO DN 8 | 13.5 | 10.3 | 24.0 | 253.045.008 | |
| ISO DN 10 | 17.2 | 14.0 | 24.0 | 253.045.010 | |

Cross-Piece (from block-body)

| | |
|--|---|
| Product group: | Welding-Fittings |
| Title: | Cross-Piece (from block-body) |
| Valid standards: | Pipe connection acc. DIN 11866 Row B (ISO 1127) |
| Material: | Stainless steel 1.4435 BN2 (Fe < 0,5%) acc. EN 10088 |
| Sterelizing temperature: | 150°C |
| Type of construction / Surface quality: | Inside and outside surface: bright finish. Butt-weld-Ends for welding Ra inside < 0,4 µm, Ra outside: < 0.8 µm |
| Pipe-Hygienic Classes: | H3 / H4 acc. DIN 11866 |
| Marking: | Material, Batch-Number, Producer |
| Certificates: | Certificate acc. EN 10204-3.1B |
| Option: | Electropolishing and further dimensions on request available. |
| Remarks: | All sizes made from block-body Technical contents are subject to change |

| Dimensions for Cross-Piece (from block-body) | | | | | |
|--|------|------|------|-------------|--|
| Sizes | AD | ID | L | Item-Number | |
| acc. DIN 11866 Row B (ISO 1127) | | | | | |
| ISO DN 6 | 10.2 | 7.0 | 24.0 | 254.045.006 | <p>The drawing shows a cross-section of a cross-piece. It consists of a central vertical pipe with two horizontal pipes intersecting it. The length of each horizontal pipe is labeled 'L'. The outer diameter of the horizontal pipes is labeled 'AD', and the inner diameter is labeled 'ID'. The drawing uses hatching to indicate the different parts of the assembly.</p> |
| ISO DN 8 | 13.5 | 10.3 | 24.0 | 254.045.008 | |
| ISO DN 10 | 17.2 | 14.0 | 24.0 | 254.045.010 | |

Concentric Reducer

Product group: Welding-Fittings

Title: Concentric Reducer

Valid standards: DIN 11865 with pipe connection acc. DIN 11866 Row B (ISO 1127)

Material: Stainless steel 1.4435 BN2 (Fe < 0,5%) acc. EN 10088

Sterelizing temperature: 150°C

Type of construction/Surface quality: Inside and outside surface: bright finish. Buttweild-Ends for orbital-welding
Ra inside < 0,8 µm, Ra outside: < 0.8 µm

Pipe-Hygienic Classes: H3 acc. DIN 11866
*H4 (Ra < 0.4µm), *H5 (Ra < 0.25µm) / *on request available

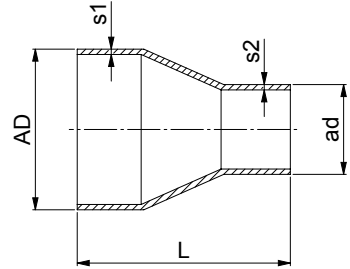
Marking: Material, Batch-Number, Producer

Certificates: Certificate acc. EN 10204-3.1

Option: Electropolishing. Further dimensions on request available.

Remarks: Technical contents are subject to change

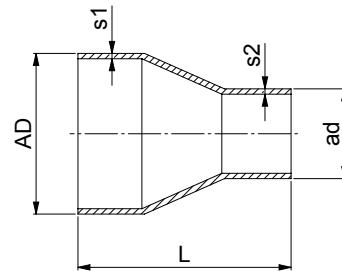
| Dimensions for Concentric Reducer | | | | | | |
|-----------------------------------|------|------|-----|-----|------|------------------|
| Sizes | AD | ad | s1 | s2 | L | Item-Number |
| nach DIN 11866 Row B (ISO 1127) | | | | | | |
| DN 10 - DN 08 | 17.2 | 13.5 | 1.6 | 1.6 | 60.0 | 255.172.135.DOCK |
| DN 15 - DN 08 | 21.3 | 13.5 | 1.6 | 1.6 | 60.0 | 255.213.135.DOCK |
| DN 15 - DN 10 | 21.3 | 17.2 | 1.6 | 1.6 | 60.0 | 255.213.172.DOCK |
| DN 20/1 - DN 08 | 26.9 | 13.5 | 1.6 | 1.6 | 60.0 | 255.269.135.DOCK |
| DN 20/1 - DN 10 | 26.9 | 17.2 | 1.6 | 1.6 | 60.0 | 255.269.172.DOCK |
| DN 20/1 - DN 15 | 26.9 | 21.3 | 1.6 | 1.6 | 60.0 | 255.269.213.DOCK |
| DN 25/1 - DN 15 | 33.7 | 21.3 | 2.0 | 1.6 | 70.0 | 255.337.213.DOCK |
| DN 25/1 - DN 20/1 | 33.7 | 26.9 | 2.0 | 1.6 | 70.0 | 255.337.269.DOCK |
| DN 32 - DN 15 | 42.4 | 21.3 | 2.0 | 1.6 | 80.0 | 255.424.213.DOCK |
| DN 32 - DN 20/1 | 42.4 | 26.9 | 2.0 | 1.6 | 80.0 | 255.424.269.DOCK |
| DN 32 - DN 25/1 | 42.4 | 33.7 | 2.0 | 2.0 | 80.0 | 255.424.337.DOCK |
| DN 40 - DN 15 | 48.3 | 21.3 | 2.0 | 1.6 | 90.0 | 255.483.213.DOCK |
| DN 40 - DN 20/1 | 48.3 | 26.9 | 2.0 | 1.6 | 90.0 | 255.483.269.DOCK |
| DN 40 - DN 25/1 | 48.3 | 33.7 | 2.0 | 2.0 | 90.0 | 255.483.337.DOCK |
| DN 40 - DN 32 | 48.3 | 42.4 | 2.0 | 2.0 | 90.0 | 255.483.424.DOCK |



Concentric Reducer

| | |
|--|--|
| Product group: | Welding-Fittings |
| Title: | Concentric Reducer |
| Valid standards: | DIN 11865 with pipe connection acc. DIN 11866 Row B (ISO 1127) |
| Material: | Stainless steel 1.4435 BN2 (Fe < 0,5%) acc. EN 10088 |
| Sterelizing temperature: | 150°C |
| Type of construction / Surface quality: | Inside and outside surface: bright finish. Buttweld-Ends for orbital-welding Ra inside < 0,8 µm, Ra outside: < 0.8 µm |
| Pipe-Hygienic Classes: | H3 acc. DIN 11866 *H4 (Ra < 0.4µm), *H5 (Ra < 0.25µm) / *on request available |
| Marking: | Material, Batch-Number, Producer |
| Certificates: | Certificate acc. EN 10204-3.1 |
| Option: | Electropolishing. Further dimensions on request available. |
| Remarks: | Technical contents are subject to change |

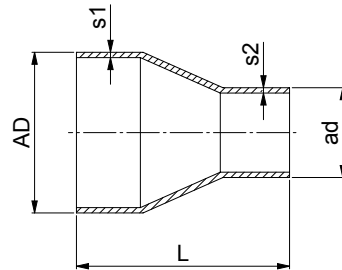
| Dimensions for Concentric Reducer | | | | | | |
|-----------------------------------|-------|------|-----|-----|-------|------------------|
| Sizes | AD | ad | s1 | s2 | L | Item-Number |
| acc. DIN 11866 Row B (ISO 1127) | | | | | | |
| DN 50 - DN 15 | 60.3 | 21.3 | 2.0 | 1.6 | 100.0 | 255.603.213.DOCK |
| DN 50 - DN 20/1 | 60.3 | 26.9 | 2.0 | 1.6 | 100.0 | 255.603.269.DOCK |
| DN 50 - DN 25/1 | 60.3 | 33.7 | 2.0 | 2.0 | 100.0 | 255.603.337.DOCK |
| DN 50 - DN 32 | 60.3 | 42.4 | 2.0 | 2.0 | 100.0 | 255.603.424.DOCK |
| DN 50 - DN 40 | 60.3 | 48.3 | 2.0 | 2.0 | 100.0 | 255.603.483.DOCK |
| DN 65 - DN 25/1 | 76.1 | 33.7 | 2.0 | 2.0 | 110.0 | 255.761.337.DOCK |
| DN 65 - DN 32 | 76.1 | 42.4 | 2.0 | 2.0 | 110.0 | 255.761.424.DOCK |
| DN 65 - DN 40 | 76.1 | 48.3 | 2.0 | 2.0 | 110.0 | 255.761.483.DOCK |
| DN 65 - DN 50 | 76.1 | 60.3 | 2.0 | 2.0 | 110.0 | 255.761.603.DOCK |
| DN 80 - DN 50 | 88.9 | 60.3 | 2.3 | 2.0 | 110.0 | 255.889.603.DOCK |
| DN 80 - DN 65 | 88.9 | 76.1 | 2.3 | 2.0 | 110.0 | 255.889.761.DOCK |
| DN 100 - DN 65 | 114.3 | 76.1 | 2.3 | 2.3 | 135.0 | 255.114.761.DOCK |
| DN 100 - DN 80 | 114.3 | 88.9 | 2.3 | 2.3 | 135.0 | 255.114.889.DOCK |



Concentric Reducer

| | |
|---|--|
| Product group: | Welding-Fittings |
| Title: | Concentric Reducer |
| Valid standards: | DIN 11865 with pipe connection acc DIN 11866 Row C (ASME-BPE 2009) |
| Material: | Stainless steel 1.4435 BN2 (Fe < 0,5%) acc. EN 10088 |
| Sterelizing temperature: | 150°C |
| Type of construction/ Surface quality: | Inside and outside surface: bright finish. Butt weld-Ends for orbital-welding. Ra inside < 0,8 µm, Ra outside: < 0.8 µm |
| Pipe-Hygienic Classes: | H3 acc. DIN 11866 *H4 (Ra < 0.4µm), *H5 (Ra < 0.25µm) / *on request available. |
| Marking: | Material, Batch-Number, Producer |
| Certificates: | Certificate acc. EN 10204-3.1 |
| Option: | Electropolishing. Further dimensions on request available. |
| Remarks: | Technical contents are subject to change |

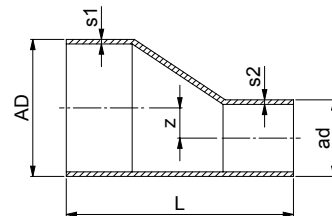
| Dimensions for Concentric Reducer | | | | | | |
|--------------------------------------|-------|-------|------|------|-------|------------------|
| Sizes | AD | ad | s1 | s2 | L | Item-Number |
| acc. DIN 11866 Row C (ASME-BPE 2009) | | | | | | |
| NW 3/8" - 1/4" | 9.53 | 6.35 | 0.89 | 0.89 | 38.0 | 255.095.063.DOCK |
| NW 1/2" - 1/4" | 12.7 | 6.35 | 1.65 | 0.89 | 38.0 | 255.127.063.DOCK |
| NW 1/2" - 3/8" | 12.7 | 9.53 | 1.65 | 0.89 | 38.0 | 255.127.095.DOCK |
| NW 3/4" - 1/4" | 19.05 | 6.35 | 1.65 | 0.89 | 38.0 | 255.190.063.DOCK |
| NW 3/4" - 1/2" | 19.05 | 12.7 | 1.65 | 1.65 | 60.0 | 255.190.127.DOCK |
| NW 3/4" - 3/8" | 19.05 | 9.53 | 1.65 | 0.89 | 60.0 | 255.190.095.DOCK |
| NW 1" - 1/2" | 25.4 | 12.7 | 1.65 | 1.65 | 60.0 | 255.254.127.DOCK |
| NW 1" - 3/4" | 25.4 | 19.05 | 1.65 | 1.65 | 60.0 | 255.254.190.DOCK |
| NW 1 1/2" - 1/2" | 38.1 | 12.7 | 1.65 | 1.65 | 80.0 | 255.381.127.DOCK |
| NW 1 1/2" - 3/4" | 38.1 | 19.05 | 1.65 | 1.65 | 80.0 | 255.381.190.DOCK |
| NW 1 1/2" - 1" | 38.1 | 25.4 | 1.65 | 1.65 | 80.0 | 255.381.254.DOCK |
| NW 2" - 1" | 50.8 | 25.4 | 1.65 | 1.65 | 90.0 | 255.508.254.DOCK |
| NW 2" - 1 1/2" | 50.8 | 38.1 | 1.65 | 1.65 | 90.0 | 255.508.381.DOCK |
| NW 2 1/2" - 1" | 63.5 | 25.4 | 1.65 | 1.65 | 100.0 | 255.635.254.DOCK |
| NW 2 1/2" - 1 1/2" | 63.5 | 38.1 | 1.65 | 1.65 | 100.0 | 255.635.381.DOCK |
| NW 2 1/2" - 2" | 63.5 | 50.8 | 1.65 | 1.65 | 100.0 | 255.635.508.DOCK |
| NW 3" - 1 1/2" | 76.2 | 38.1 | 1.65 | 1.65 | 110.0 | 255.762.381.DOCK |
| NW 3" - 2" | 76.2 | 50.8 | 1.65 | 1.65 | 110.0 | 255.762.508.DOCK |
| NW 3" - 2 1/2" | 76.2 | 63.5 | 1.65 | 1.65 | 110.0 | 255.762.635.DOCK |
| NW 4" - 2" | 101.6 | 50.8 | 2.11 | 1.65 | 135.0 | 255.102.508.DOCK |
| NW 4" - 2 1/2" | 101.6 | 63.5 | 2.11 | 1.65 | 135.0 | 255.102.635.DOCK |
| NW 4" - 3" | 101.6 | 76.2 | 2.11 | 1.65 | 135.0 | 255.102.762.DOCK |



Eccentric Reducer

| | |
|--|--|
| Product group: | Welding-Fittings |
| Title: | Eccentric Reducer |
| Valid standards: | DIN 11865 with pipe connection acc. DIN 11866 Row B (ISO 1127) |
| Material: | Stainless steel 1.4435 BN2 (Fe < 0,5%) acc. EN 10088 |
| Zulässige Sterilisationstemperaturen: | 150°C |
| Ausführungsart / Oberflächenbeschaffenheit: | Inside and outside surface: bright finish. Buttweld-Ends for orbital-welding Ra inside < 0,8 µm, Ra outside: < 0.8 µm |
| Rohr-Hygiene-Klassen: | H3 acc. DIN 11866 *H4 (Ra < 0.4µm), *H5 (Ra < 0.25µm) / *on request available |
| Marking: | Material, Batch-Number, Producer |
| Certificates: | Certificate acc. EN 10204-3.1 |
| Option: | Electropolishing. Further dimensions on request available. |
| Remarks: | Technical contents are subject to change |

| Dimensions for Eccentric Reducer | | | | | | |
|----------------------------------|------|------|-----|-----|------|------------------|
| Sizes | AD | ad | s1 | s2 | L | Item-Number |
| acc. DIN 11866 Row B (ISO 1127) | | | | | | |
| DN 10 - DN 08 | 17.2 | 13.5 | 1.6 | 1.6 | 60.0 | 256.172.135.DOCK |
| DN 15 - DN 08 | 21.3 | 13.5 | 1.6 | 1.6 | 60.0 | 256.213.135.DOCK |
| DN 15 - DN 10 | 21.3 | 17.2 | 1.6 | 1.6 | 60.0 | 256.213.172.DOCK |
| DN 20/1 - DN 08 | 26.9 | 13.5 | 1.6 | 1.6 | 60.0 | 256.269.135.DOCK |
| DN 20/1 - DN 10 | 26.9 | 17.2 | 1.6 | 1.6 | 60.0 | 256.269.172.DOCK |
| DN 20/1 - DN 15 | 26.9 | 21.3 | 1.6 | 1.6 | 60.0 | 256.269.213.DOCK |
| DN 25/1 - DN 15 | 33.7 | 21.3 | 2.0 | 1.6 | 70.0 | 256.337.213.DOCK |
| DN 25/1 - DN 20/1 | 33.7 | 26.9 | 2.0 | 1.6 | 70.0 | 256.337.269.DOCK |
| DN 32 - DN 15 | 42.4 | 21.3 | 2.0 | 1.6 | 80.0 | 256.424.213.DOCK |
| DN 32 - DN 20/1 | 42.4 | 26.9 | 2.0 | 1.6 | 80.0 | 256.424.269.DOCK |
| DN 32 - DN 25/1 | 42.4 | 33.7 | 2.0 | 2.0 | 80.0 | 256.424.337.DOCK |
| DN 40 - DN 15 | 48.3 | 21.3 | 2.0 | 1.6 | 90.0 | 256.483.213.DOCK |
| DN 40 - DN 20/1 | 48.3 | 26.9 | 2.0 | 1.6 | 90.0 | 256.483.269.DOCK |
| DN 40 - DN 25/1 | 48.3 | 33.7 | 2.0 | 2.0 | 90.0 | 256.483.337.DOCK |
| DN 40 - DN 32 | 48.3 | 42.4 | 2.0 | 2.0 | 90.0 | 256.483.424.DOCK |



Eccentric Reducer

Product group: Welding-Fittings

Title: Eccentric Reducer

Valid standards: DIN 11865 with pipe connection acc. DIN 11866 Row B (ISO 1127)

Material: Stainless steel 1.4435 BN2 (Fe < 0,5%) acc. EN 10088

Sterelizing temperature: 150°C

Type of construction/Surface quality: Inside and outside surface: bright finish. Buttweld-Ends for orbital-welding
Ra inside < 0,8 µm, Ra outside: < 0.8 µm

Pipe-Hygienic Classes: H3 acc. DIN 11866
*H4 (Ra < 0.4µm), *H5 (Ra < 0.25µm) / *on request available.

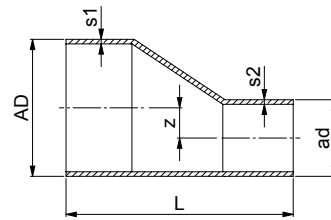
Marking: Material, Batch-Number, Producer

Certificates: Certificate acc. EN 10204-3.1

Option: Electropolishing. Further dimensions on request available.

Remarks: Technical contents are subject to change

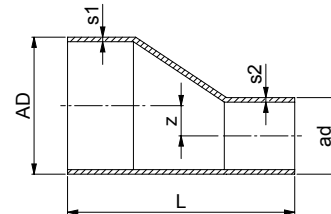
| Dimensions for Eccentric Reducer | | | | | | |
|----------------------------------|-------|------|-----|-----|-------|------------------|
| Sizes | AD | ad | s1 | s2 | L | Item-Number |
| acc. DIN 11866 Row B (ISO 1127) | | | | | | |
| DN 50 - DN 20/1 | 60.3 | 26.9 | 2.0 | 1.6 | 100.0 | 256.603.269.DOCK |
| DN 50 - DN 25/1 | 60.3 | 33.7 | 2.0 | 2.0 | 100.0 | 256.603.337.DOCK |
| DN 50 - DN 32 | 60.3 | 42.4 | 2.0 | 2.0 | 100.0 | 256.603.424.DOCK |
| DN 50 - DN 40 | 60.3 | 48.3 | 2.0 | 2.0 | 100.0 | 256.603.483.DOCK |
| DN 65 - DN 25/1 | 76.1 | 33.7 | 2.0 | 2.0 | 110.0 | 256.761.337.DOCK |
| DN 65 - DN 40 | 76.1 | 48.3 | 2.0 | 2.0 | 110.0 | 256.761.483.DOCK |
| DN 65 - DN 50 | 76.1 | 60.3 | 2.0 | 2.0 | 110.0 | 256.761.603.DOCK |
| DN 80 - DN 50 | 88.9 | 60.3 | 2.3 | 2.0 | 110.0 | 256.889.603.DOCK |
| DN 80 - DN 65 | 88.9 | 76.1 | 2.3 | 2.0 | 110.0 | 256.889.761.DOCK |
| DN 100 - DN 65 | 114.3 | 76.1 | 2.3 | 2.3 | 135.0 | 256.114.761.DOCK |
| DN 100 - DN 80 | 114.3 | 88.9 | 2.3 | 2.3 | 135.0 | 256.114.889.DOCK |



Eccentric Reducer

| | |
|--|--|
| Product group: | Welding-Fittings |
| Title: | Eccentric Reducer |
| Valid standards: | DIN 11865 with pipe connection acc. DIN 11866 Row C (ASME-BPE 2009) |
| Material: | Stainless steel 1.4435 BN2 (Fe < 0,5%) acc. EN 10088 |
| Sterelizing temperature: | 150°C |
| Type of construction/Surface quality: | Inside and outside surface: bright finish. Buttweld-Ends for orbital-welding Ra inside < 0,8 µm, Ra outside: < 0.8 µm |
| Pipe-Hygienic Classes: | H3 acc. DIN 11866 *H4 (Ra < 0.4µm), *H5 (Ra < 0.25µm) / *on request available |
| Marking: | Material, Batch-Number, Producer |
| Certificates: | Certificate acc. EN 10204-3.1 |
| Option: | Electropolishing. Further dimensions on request available. |
| Remarks: | Technical contents are subject to change |

| Dimensions for Wlding-Fittings | | | | | | |
|--|-------|-------|------|------|-------|------------------|
| Sizes | AD | ad | s1 | s2 | L | Item-Number |
| nach DIN 11866 Reihe C (ASME-BPE 2009) | | | | | | |
| NW 1/2" - 1/4" | 12.7 | 6.35 | 1.65 | 0.89 | 38.0 | 255.127.063.DOCK |
| NW 1/2" - 3/8" | 12.7 | 9.53 | 1.65 | 0.89 | 38.0 | 255.127.095.DOCK |
| NW 3/4" - 3/8" | 19.05 | 9.53 | 1.65 | 0.89 | 60.0 | 255.190.095.DOCK |
| NW 3/4" - 1/2" | 19.05 | 12.7 | 1.65 | 1.65 | 60.0 | 255.190.127.DOCK |
| NW 1" - 1/2" | 25.4 | 12.7 | 1.65 | 1.65 | 60.0 | 255.254.127.DOCK |
| NW 1" - 3/4" | 25.4 | 19.05 | 1.65 | 1.65 | 60.0 | 255.254.190.DOCK |
| NW 1 1/2" - 1/2" | 38.1 | 12.7 | 1.65 | 1.65 | 80.0 | 255.381.127.DOCK |
| NW 1 1/2" - 3/4" | 38.1 | 19.05 | 1.65 | 1.65 | 80.0 | 255.381.190.DOCK |
| NW 1 1/2" - 1" | 38.1 | 25.4 | 1.65 | 1.65 | 80.0 | 255.381.254.DOCK |
| NW 2" - 1" | 50.8 | 25.4 | 1.65 | 1.65 | 90.0 | 255.508.254.DOCK |
| NW 2" - 1 1/2" | 50.8 | 38.1 | 1.65 | 1.65 | 90.0 | 255.508.381.DOCK |
| NW 2 1/2" - 1" | 63.5 | 25.4 | 1.65 | 1.65 | 100.0 | 255.635.254.DOCK |
| NW 2 1/2" - 1 1/2" | 63.5 | 38.1 | 1.65 | 1.65 | 100.0 | 255.635.381.DOCK |
| NW 2 1/2" - 2" | 63.5 | 50.8 | 1.65 | 1.65 | 100.0 | 255.635.508.DOCK |
| NW 3" - 1 1/2" | 76.2 | 38.1 | 1.65 | 1.65 | 110.0 | 255.762.381.DOCK |
| NW 3" - 2" | 76.2 | 50.8 | 1.65 | 1.65 | 110.0 | 255.762.508.DOCK |
| NW 3" - 2 1/2" | 76.2 | 63.5 | 1.65 | 1.65 | 110.0 | 255.762.635.DOCK |
| NW 4" - 2" | 101.6 | 50.8 | 2.11 | 1.65 | 135.0 | 255.102.508.DOCK |
| NW 4" - 2 1/2" | 101.6 | 63.5 | 2.11 | 1.65 | 135.0 | 255.102.635.DOCK |
| NW 4" - 3" | 101.6 | 76.2 | 2.11 | 1.65 | 135.0 | 255.102.762.DOCK |



Inline Sight Glass

Product group: Welding-Fittings

Title: Inline Sight Glass

Valid standards: Pipe connection acc. DIN 11866 Row A (DIN 11850) / Row B (ISO 1127)

Material: Stainless steel 1.4435 BN2 (Fe < 0,5%) acc. EN 10088, Borosilicate (DURAN Cylinder)
O-Rings: EPDM Standard

Sterelizing temperature: 135°C

Type of construction / Surface quality: Surface external metallic, shiny blank, tarnish removed
Surface internal ground and polished Ra internal < 0.4 µm

Pipe-Hygienic Classes: H 3 / H 4 acc. DIN 11866

Marking: Material, Batch-Number, Producer

Certificates: Certificate acc. EN 10204-3.1

Option: Electropolishing.
Operating temperature can be increased in special cases to 100°C (medium-dependently).

Remarks: Technical contents are subject to change

| Dimensions for Inline Sight Glass | | | | | | | | | | |
|-----------------------------------|------|------|-------|------------|------|------|-------------|----------------------------------|---------------------------------|--|
| Sizes | d1 | d2 | L1 | Gewinde | SW | Nut | Item-Number | max. working- pressure in bar | max. working- * temperature. | |
| acc. DIN 11866 Row A (DIN 11850) | | | | | | | | | | |
| DIN 8 | 10.0 | 8.0 | 80.0 | M 22 x 1.5 | 22.0 | - | 249.001.008 | 19.1 | 80° C | |
| DIN 10 | 12.0 | 10.0 | 80.0 | M 22 x 1.5 | 27.0 | - | 249.001.010 | 18.9 | 80° C | |
| acc. DIN 11866 Row B (ISO 1127) | | | | | | | | | | |
| ISO DN 8 | 13.5 | 10.3 | 90.0 | M 22 x 1.5 | 27.0 | - | 249.000.008 | 18.7 | 80° C | |
| ISO DN 10 | 17.2 | 14.0 | 90.0 | M 26 x 1.5 | 32.0 | - | 249.000.010 | 14.1 | 80° C | |
| ISO DN 15 | 21.3 | 18.1 | 100.0 | M 30 x 2.0 | 36.0 | - | 249.000.015 | 10.8 | 80° C | |
| ISO DN 20 | 26.9 | 23.7 | 110.0 | M 36 x 2.0 | - | 48.0 | 249.000.020 | 9.6 | 80° C | |
| ISO DN 25 | 33.7 | 29.7 | 120.0 | M 42 x 2.0 | - | 52.0 | 249.000.025 | 7.9 | 80° C | |
| ISO DN 32 | 42.4 | 38.4 | 130.0 | M 52 x 2.0 | - | 62.0 | 249.000.032 | 6.9 | 80° C | |
| ISO DN 40 | 48.3 | 44.3 | 140.0 | M 56 x 2.0 | - | 65.0 | 249.000.040 | 7.0 | 80° C | |
| ISO DN 50 | 60.3 | 56.3 | 140.0 | M 74 x 2.0 | - | 80.0 | 249.000.050 | 6.4 | 80° C | |

Inline Sight Glass

| | |
|--|--|
| Product group: | Welding-Fittings |
| Title: | Inline Sight Glass with TC-Ends or other connections |
| Valid standards: | TC - Version: DIN 32676 with pipe connection acc. DIN 11866 Row B (ISO 1127) Other connections acc. Connectors standard or as specified. |
| Material: | Stainless steel 1.4435 BN2 (Fe < 0,5%) acc. EN 10088, Borosilicate (DURAN Cylinder) O-Rings: EPDM Standard |
| Sterelizing temperature: | 135°C |
| Type of construction / Surface quality: | Surface external metallic, shiny blank, tarnish removed Surface internal ground and polished Ra internal < 0.4 µm |
| Pipe-Hygienic Classes: | H 3 / H 4 acc. DIN 11866 |
| Marking: | Material, Batch-Number, Producer |
| Certificates: | Certificate acc.EN 10204-3.1 |
| Option: | Electropolishing. Ground. Operating temperature can be increased in special cases to 100°C (medium-dependently). On request with other specified connections. |
| Remarks: | Technical contents are subject to change |

| | |
|--|--|
| Inline Sight Glass with TC-Ends or other connections on request. | |
| Measures and sizes on request available. All Tri-Clamp Connections are orbital welded. Length of Tri-Clamp Ferrules: see Chapter 1: Tri-Clamp Connections | |
| Inline Sight Glass with Tri-Clamp Connections: | |
| | |